

SPEAKERS' CORNER

VACANCY SCHEDULE, NOVEMBER 2021

37 PARLIAMENT STREET
CAPE TOWN



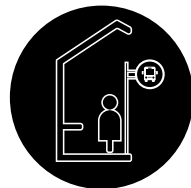
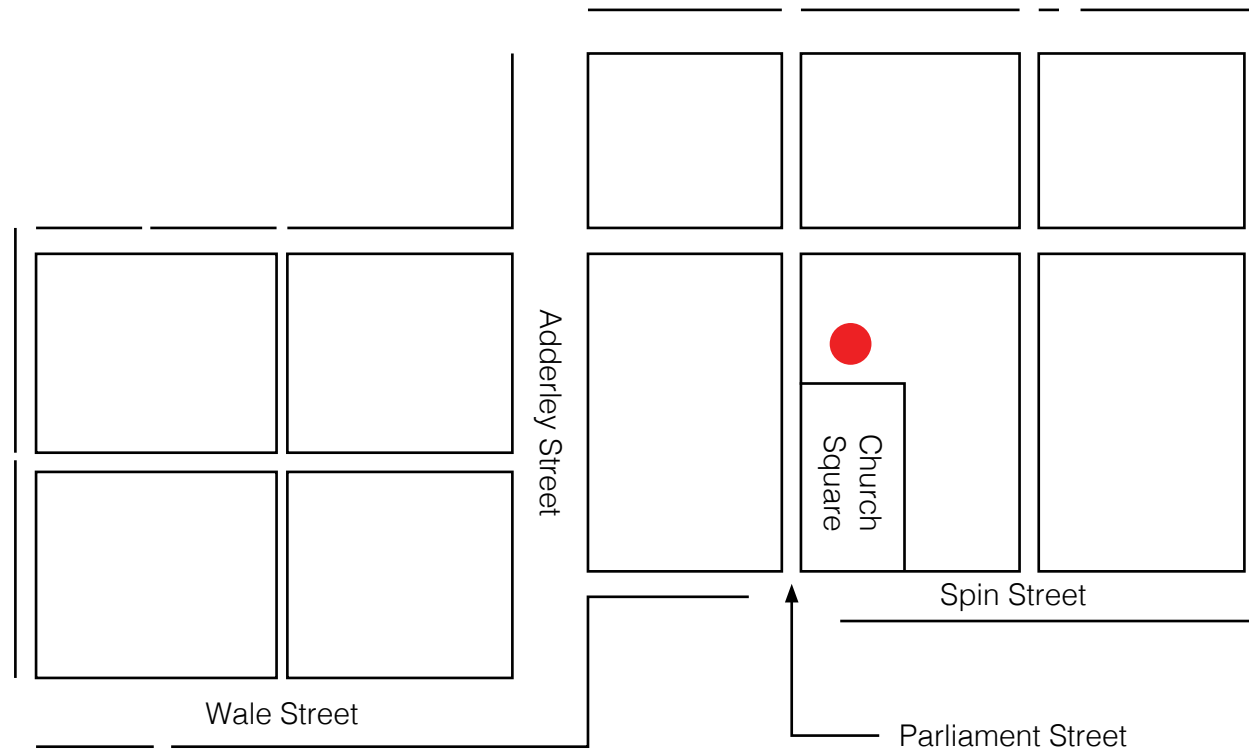


Speakers' Corner

Prime office space available in Speakers' Corner, a historic building that has been carefully restored to retain its character while providing modern office accommodation. Situated on bustling Church Square with its cool coffee shops, restaurants and lively public square, the building offers superb connectivity to public transport and all the amenities that the CBD has to offer.

With 24 hour security and daytime concierge, Speakers' Corner also offers tenants a communal library lounge, 8 seater boardroom and meeting rooms. The building features a Korean restaurant on the ground floor, a rooftop bar and fine dining restaurant overlooking Church Square.

Location



Bus stops & taxis
within walking
distance



Restaurants &
bars right on
the doorstep

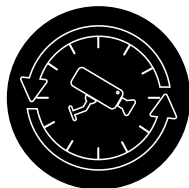
Features



Undercover parking available



Reception / Concierge



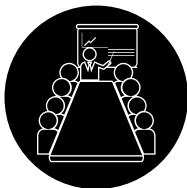
24 hour security and CCTV



Free WiFi in public areas



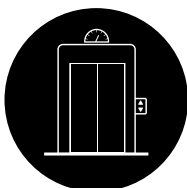
2 x 4 seater meeting room



Fully serviced 8 seater boardroom



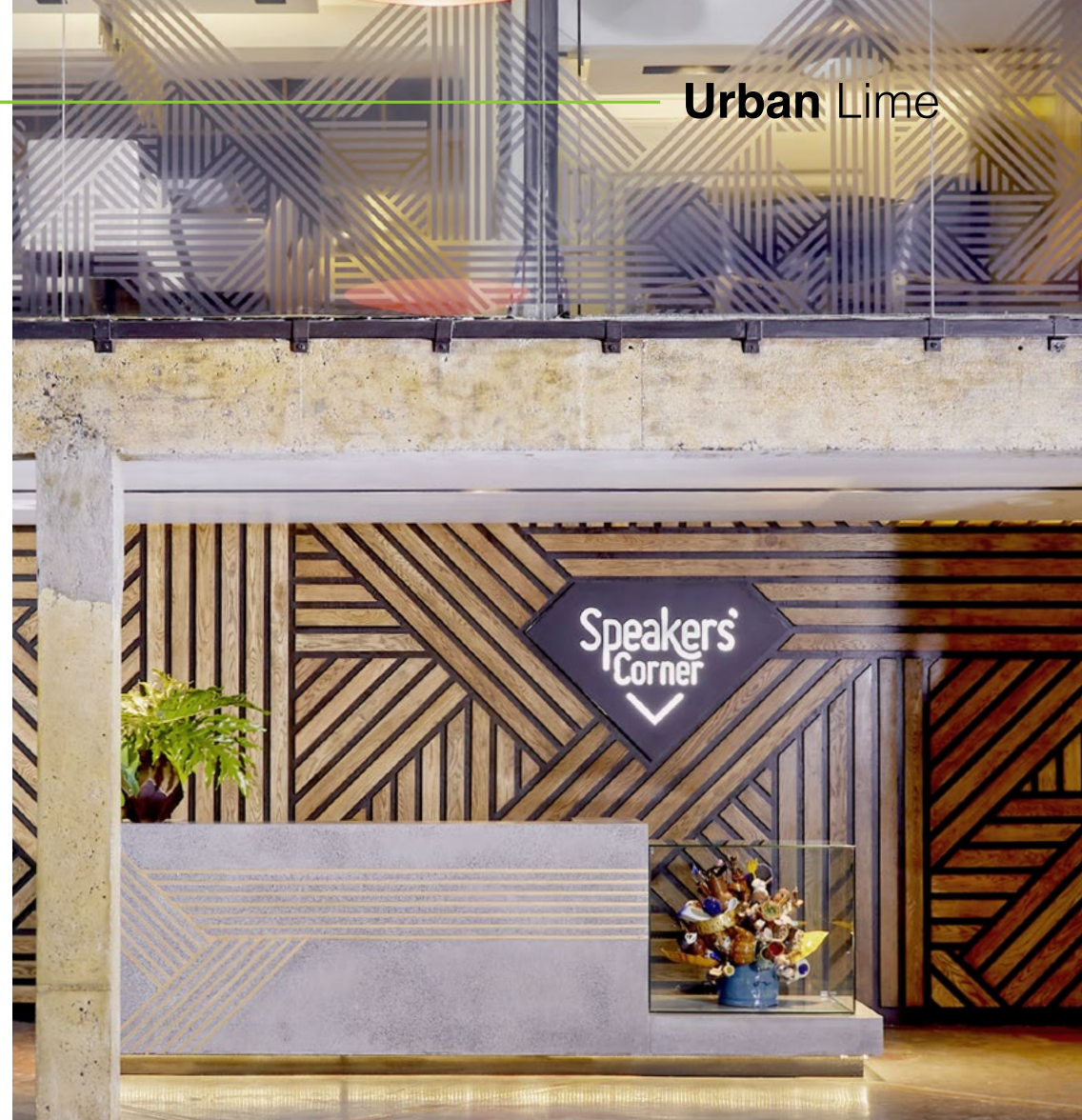
Library lounge & communal work spaces



Historic elevator

37 PARLIAMENT STREET
CAPE TOWN

Urban Lime

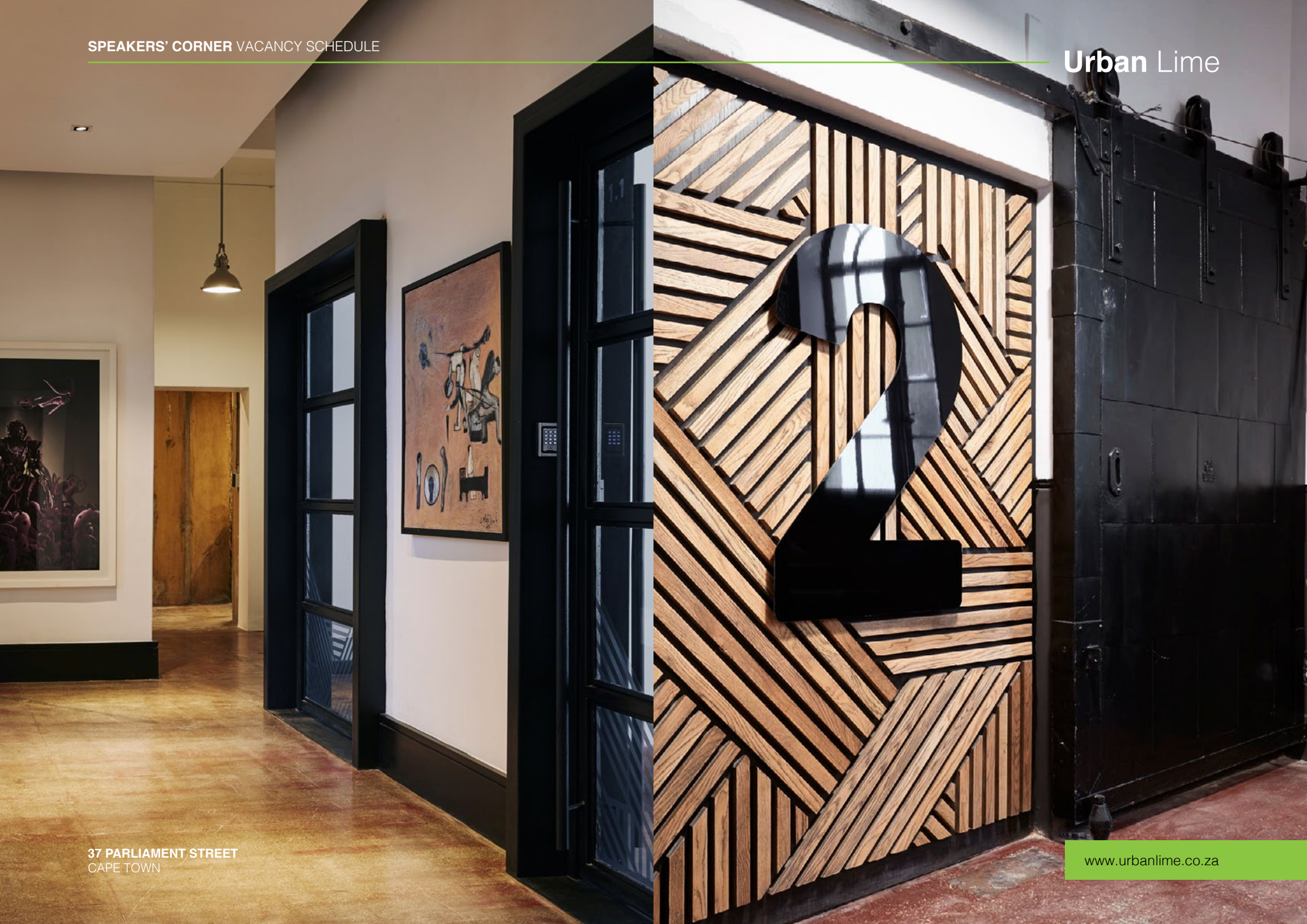


Single Bays @ R1,350.00 per month excl. VAT
Tandems @ R2,500.00 per month excl. VAT

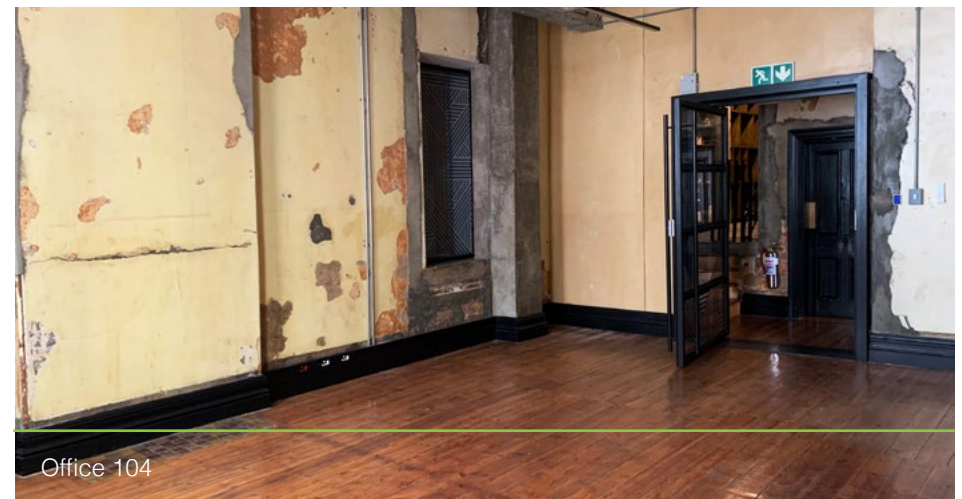
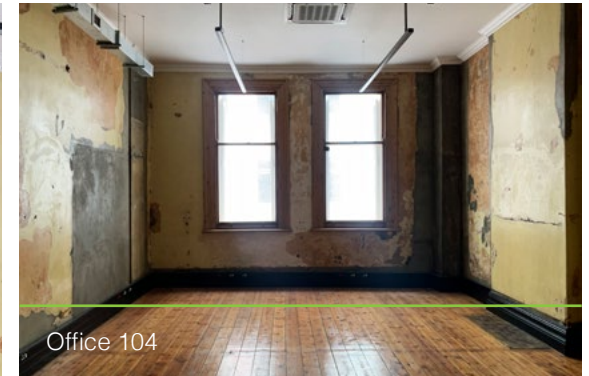
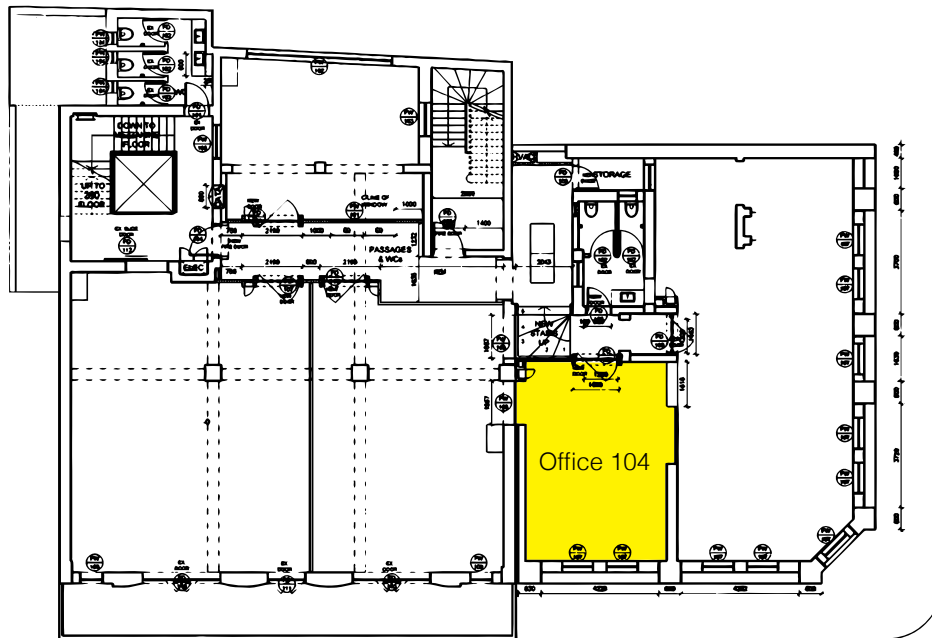
www.urbanlime.co.za

Communal Space

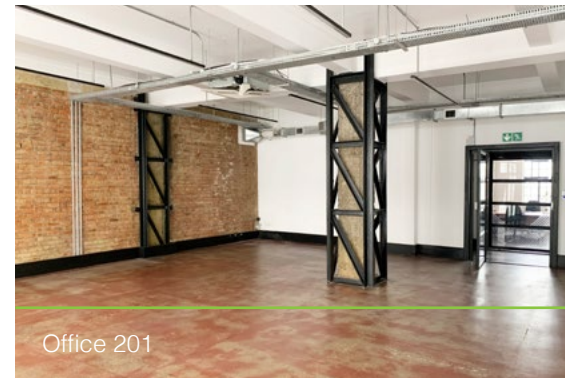
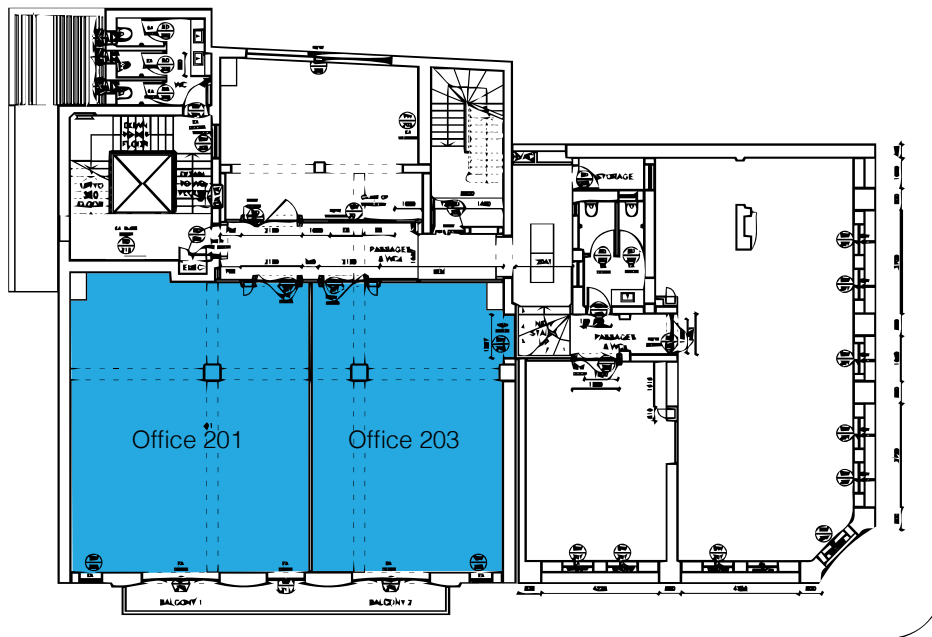




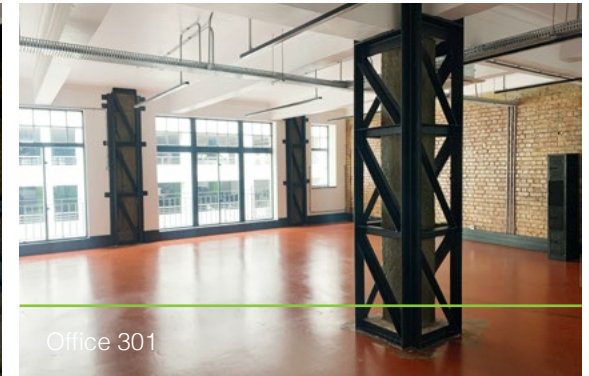
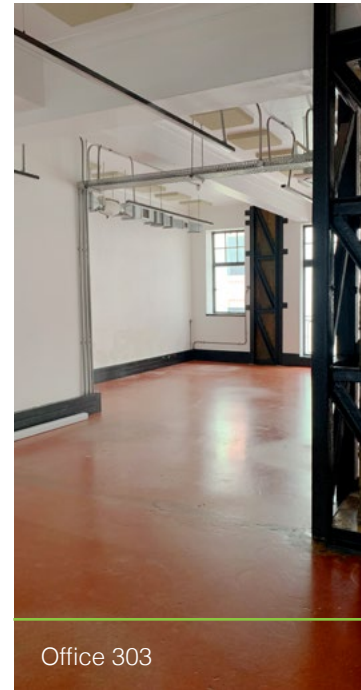
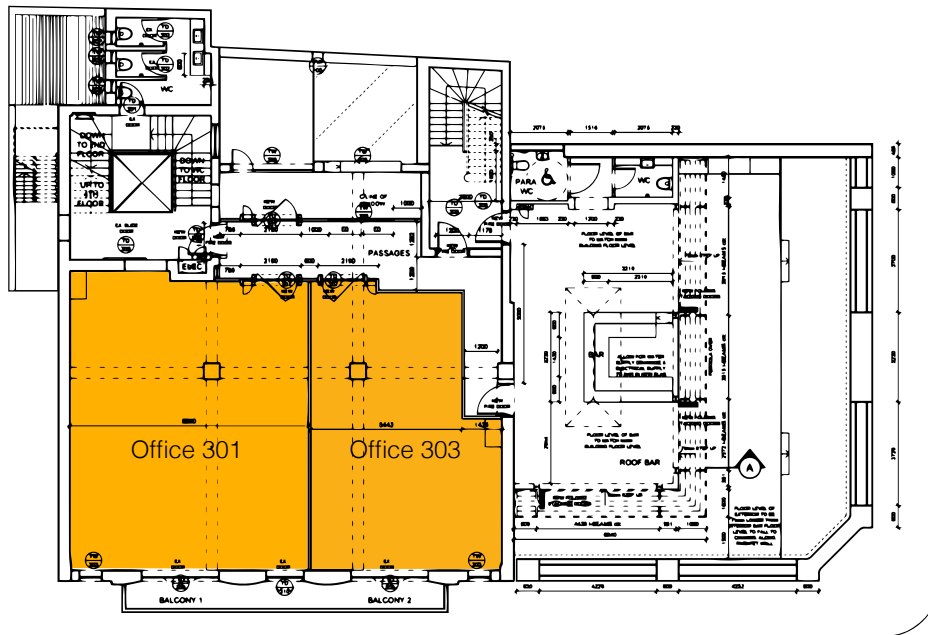
Vacancies | First Floor



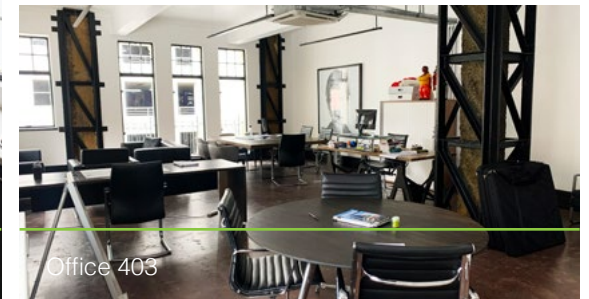
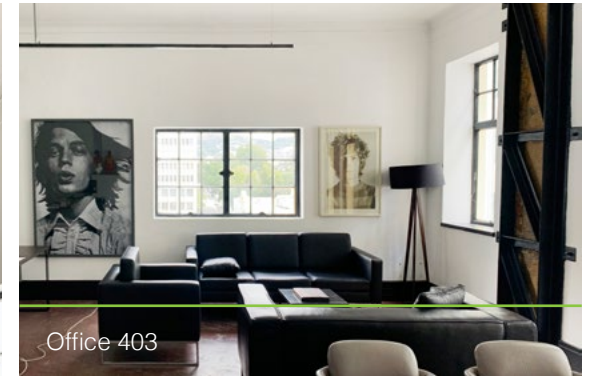
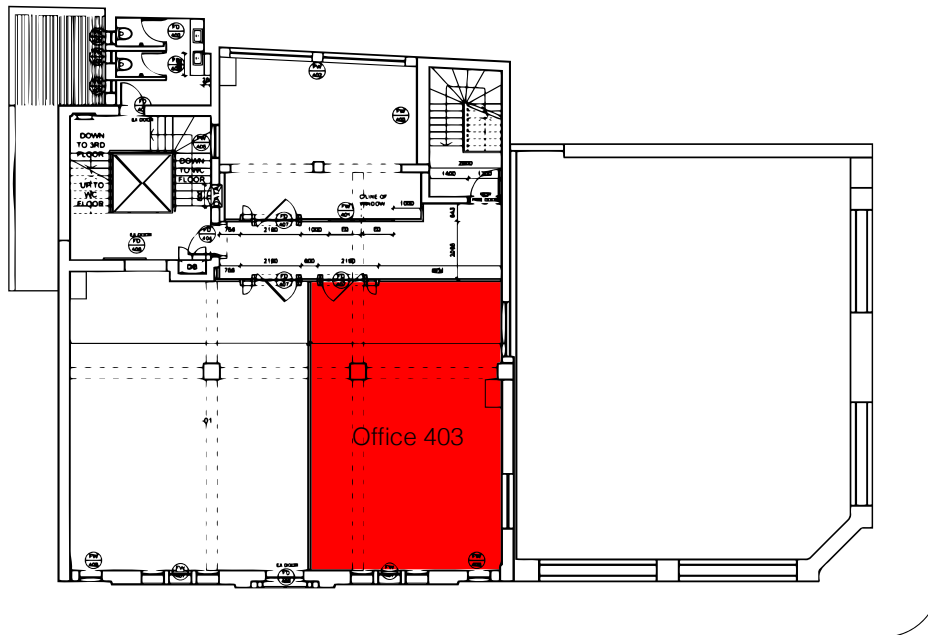
Vacancies | Second Floor



Vacancies | Third Floor



Vacancies | Fourth Floor



Tenants

"Discoveries are made when boundaries are crossed. At Fyn, South Africa's wild freedom is tempered by the rigours of contemporary cuisine to create a restaurant at the edge. Check your assumptions with your coats and join us on a journey of flavour discovery."



37 PARLIAMENT STREET
CAPE TOWN



"GovChat enhances governance transparency and accountability through the provision of tools for citizens to measure service levels, combined with the technology and empirical data analytics for government to improve them."

Church Square

Church Square, comprising approximately 2,000 sqm of space, is located in a significant position in the broader Cape Town CBD, close to major transport services, within steps of Parliament (and associated offices), Company Gardens, the Western Cape Government, as well as major commercial offices e.g. Woolworths.

Church Square is described by the Cape Town Partnership as a “multi-layered space in the heart of Cape Town, with a long and complex history”. This area of the city is particularly rich in slave history. On one side stands The Groote Kerk Church, which gives the square its name. The street running alongside Church Square was the site of a silk-spinning factory, hence its name, Spin Street. On the island running down the centre of the street is a concrete plinth, which many do not realise is a memorial to the Slave Tree that once stood on this spot (removed in 1916), underneath which slaves waited while their masters attended church services at the Groote Kerk Church.



Finer Details

Unit Description	Size	R Rental / sqm	R Monthly (plus VAT)
Office			Plus Ops Cost
1st Floor, Office 104	53	175	R9,275 excl. VAT
2nd Floor, Office 201	152	175	R26,600 excl. VAT
2nd Floor, Office 203	126	175	R22,050 excl. VAT
3rd Floor, Office 301	135	175	R23,625 excl. VAT
4th Floor, Office 403	99	175	R17,325 excl. VAT
Film shoot availability	Various	Negotiable	Negotiable

Jake Kenshole

jake@urbanlime.co.za

4th Floor, Speakers' Corner
37 Parliament Street, Cape Town

